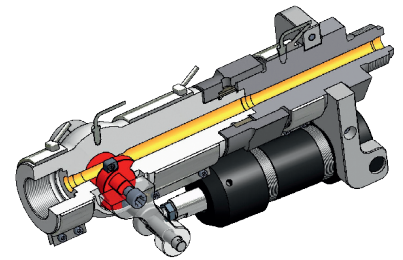


bolt shut-off function by double actioned cylinder

OFS-bolt shut-off nozzle type BV



By the controlled closing and opening the flow canal, the cycle time can be reduced and a more exactly injection process is possible. One flow canal technology.

APPLICATION FIELDS:

The **OFS**-bolt shut-off nozzle type BV is used for processing of thermoplastic materials and thermoplastic elastomers. An integrated pneumatic or hydraulic cylinder controls the bolt by a fixed lever, whereby the flow channel is closed and opened. The system is designed in such a way that there is no forced opening when the system pressure is present.

Due the one flow canal technology, the effect of stratification and memory effect during injection is prevented.

NOZZLE SIZES:

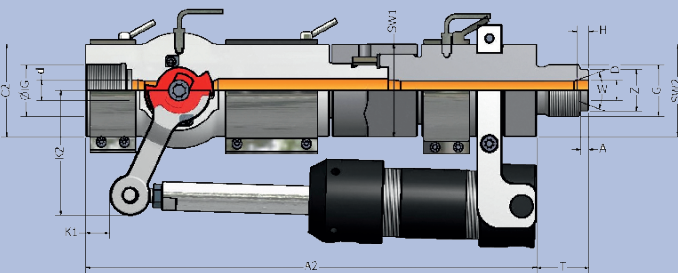
- type BVI → screw diameter up to app. 50 mm
- type BVII → screw diameter appr. 50-120 mm
- typ BVIII → screw diameter up from appr. 120 mm

YOUR BENEFIT:

1. single flow channel technology (no separation of the melt flow).
2. prevents air pockets during screw retraction.
3. shorten cycle time (parallel movements, dosing while mould opening).
4. higher process security.
5. optimal for shear and friction sensitive plastics – optimal rheological design .
6. easy and fast colour and material change possible.
7. improved homogenization (increased back pressure possible).
8. pre-compression of the melt.
9. foaming (physical, chemical).
10. no memory effect.

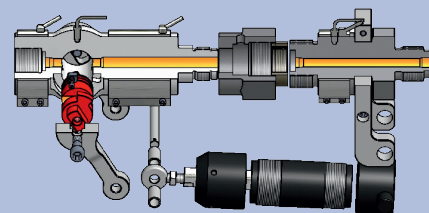
PRODUCT FEATUREST:

- ▶ modular, robust design
- ▶ wear resistance design
- ▶ easy handling
- ▶ all spare parts available individually
- ▶ delivery incl. heater and thermocouple
- ▶ flexible and customer-specific design
- ▶ easy retrofit
- ▶ suitable for all injection moulding machines
- ▶ optimal rheological design
- ▶ easy maintenance
- ▶ furthermore options, for example:
 - filter
 - mixer
 - piston position sensor
 - plastic-leak-proof head design

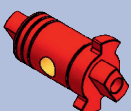


DATA AND STANDARD DIMENSIONS (mm)

		BVI	BVII	BVIII
appr. screw dia	SD (mm)	bis ca. 50	ca. 50-120	ab ca. 120
max. injection pressure	bar	2800/400° C	2800/400° C	2800/400° C
length	A2	390	390	390
nozzlebase dia	C2	60	70	80
hexagon connection nut	SW1	60	70	80
hexagon nozzlebase	SW2	60	70	80
interior thread	IG	M 24 x 1,5	M 36 x 2	M 45 x 2
drill	d	8,0	12,0	18,0
collision dimension	K1	23 mm	23 mm	23 mm
collision dimension	K2	110 mm	110 mm	110 mm



OFS-bolt shut-off nozzle type BV „components“



OFS-bolt type BV

REQUIRED MEASUREMENTS		
machine thread	G	
T/A/D/Z/W°/H		specify if required
length of nozzlehead	L	
drill	d	
radius / surface	R	

REQUIRED PARAMETERS		
material (MFI)		
shot weight	gr.	
melt temperature	°C	
injection time	sec	
injection pressure spec.	bar	
machine type		
screw dia	mm	