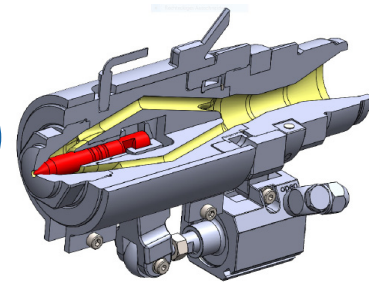


the high-end needle shut-off nozzle

OFS-needle shut-off nozzle type NVP (pro)



by the controlled closing and opening the flow canal, the cycle time can be reduced and a more exactly injection process is possible

APPLICATION FIELDS:

The **OFS**-needle shut-off nozzle type NVP is used for processing of thermoplastic materials and thermoplastic elastomers. An integrated pneumatic or hydraulic cylinder activated the shut-off nozzle, whereby the needle opens and closes the flow channel. The needle is activated in both directions. For security, the shut-off nozzle is opened through emerging overpressure. The nozzle could be also activated by a machine side rod.

PRODUCT FEATURES:

- ▶ modular, robust design
- ▶ wear resistance design
- ▶ easy handling
- ▶ all spare parts available individually
- ▶ delivery incl. heater and thermocouple
- ▶ flexible and customer-specific design
- ▶ easy retrofit

- ▶ suitable for all injection moulding machines
- ▶ optimale rheological design
- ▶ easy maintenance
- ▶ furthermore options, for example:
 - filter
 - mixer
 - piston position sensor
 - plastic seal head design
 - pre-compression of the melt

- ▶ higher homogenisation
- ▶ pre-compression of the melt
- ▶ foaming
- ▶ direct gate injection / injection on sub-hotrunner

NOZZLE SIZES:

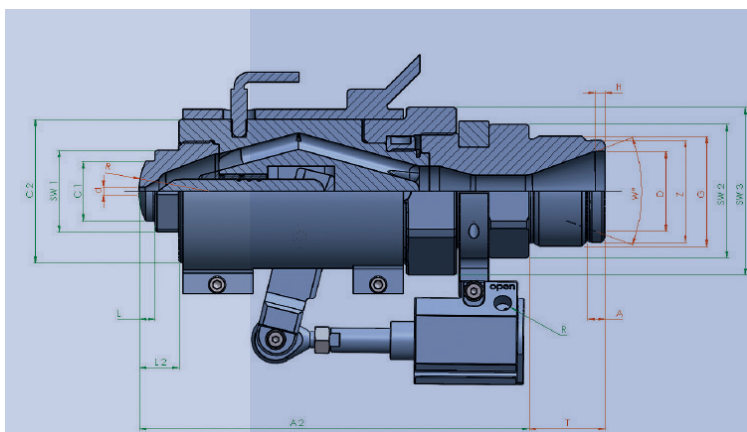
- type NVPI → screw diameter up to appr.. 40 mm
- type NVPII → screw diameter appr. 40-100 mm
- type NVPIII → screw diameter up from appr. 100 mm

YOUR BENEFIT:

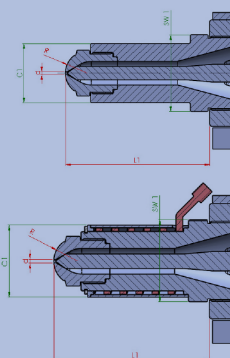
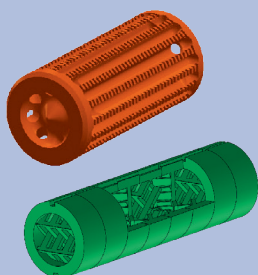
- ▶ prevents afterflowing of the melt
- ▶ prevents filamentation
- ▶ shorten cycle time (parallel movements, dosing while mold opening)
- ▶ higher process security

DATA AND STANDARD DIMENSIONS (mm)

| | | NVPI | NVPII | NVPIII |
|-------------------------------|---------------------|-----------|-----------|-----------|
| appr. screw dia | mm | bis 40 | 40-100 | ab 100 |
| max. injection pressure | bar | 3.000 | | |
| max. injection rate (at PS) | cm ³ /se | 450 | 1.600 | 3.200 |
| max. back pressure (pneum.) | bar | 850 | 750 | 700 |
| max. nozzle contact force | bar | 1.000 | 1.000 | 1.000 |
| length | A2 | 160 / 174 | 195 / 212 | 292 / 312 |
| nozzlehead dia | C1 | 25 | 30 | 50 |
| nozzlehead length L(standard) | L | 8 / 22 | 8 / 25 | 23 / 43 |
| nozzlehead length L 1 | L 2 | 18 / 32 | 22 / 39 | 41 / 61 |
| nozzlebase dia | C2 | 58 | 72 | 115 |
| hexagon nozzlehead SW 1 | SW 1 | 32 | 41 | 60 |
| hexagon adapter SW 2 | SW 2 | 50 | 60 | 80 |
| hexagon connecting nut | SW 3 | 60 | 75 | 115 |
| d max. (cylindrical) | mm | 8 | 10 | 13 |
| connecting pn.-pipe | R | 1/8* | 1/8* | 1/8* |
| connecting hydr.-pipe | R | 1/4* | 1/4* | 1/4* |
| connecting water | R | 1/8* | 1/8* | 1/8* |



additional functions and versions:



REQUIRED MEASUREMENTS

| | | |
|----------------------|----|---------------------|
| machine thread | G | |
| T/A/D/Z/W°/H | | specify if required |
| length of nozzlehead | d | |
| drill | R | |
| radius / surface | L1 | |

REQUIRED PARAMETERS

| | | |
|--------------------------|-----|--|
| material (MFI) | | |
| shot weight | gr. | |
| melt temperature | °C | |
| injection time | sec | |
| injection pressure spec. | bar | |
| machine type. | | |
| screw dia | mm | |