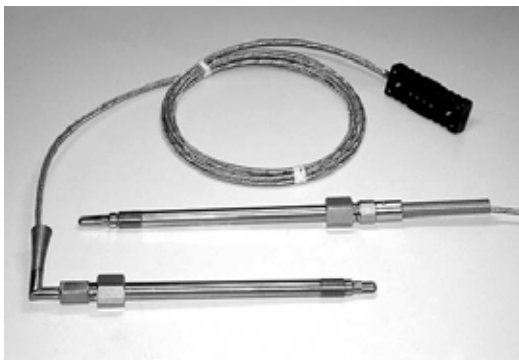


Dynisco Melt Temperature Probe Series DYMT



Description

The Melt Thermocouple Series DYMT is especially designed to meet the requirements of the polymer industry. The flexible design of this series allows the use in extrusion and injection molding process.

The mounting thread is compatible with the threads used for melt pressure measurement. Therefore, the DYMT series is ready for use in most extrusion systems.

The blade style thermocouples feature a unique blade design which reduces friction in the melt stream, the special rotation design of the blade allows low friction installation.

The Melt Thermocouple Series DYMT is also available with dual TC or RTD.

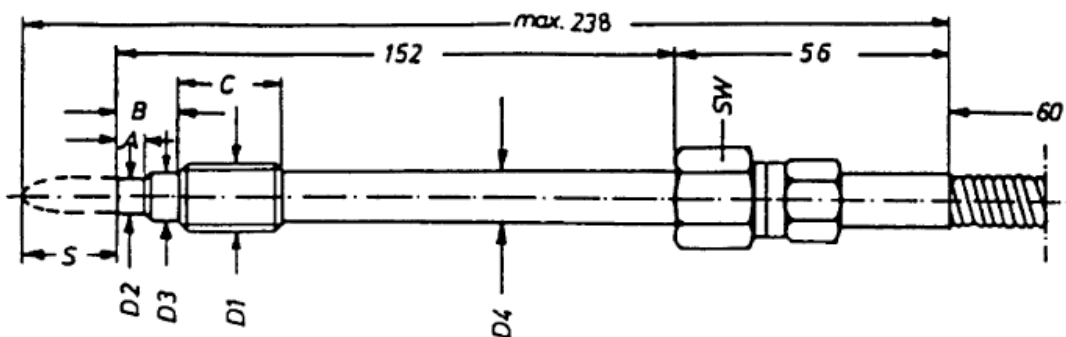
Features

- Rugged design
- Designed especially for the polymer industry
- 1000 bars max. pressure
- Various TC and RTD
- Flush or blade style
- Blade can be positioned in flow direction
- Various threads available
- DYNISCO pressure transducer mounting hole compatible

Technical Data / Operating Data	
Thread:	1/2"-20 UNF, M18 x 1.5 or M14 x 1.5
Stem Length:	152 mm standard, others on request
Blade Length:	2.5 - 30 mm, on request
Material in Contact with Media:	15-5 Mat. No 1.4545
Electrical Characteristics	
Thermocouple:	J, K, L, other types on request
RTD:	wireable as 2-, 3- or 4-wire
Connector:	IEC-Connector for Thermocouples, DIN-Connector for RTD
Pipe Connection:	Straight or 90° angled
Cable Length:	75 mm, others on request

Dimensions

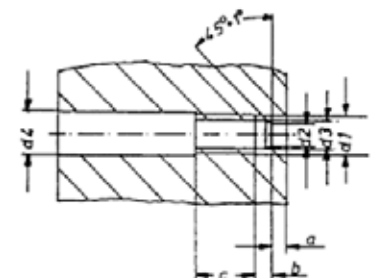
Melt Temperature Probe



D1	D2	D3	D4	A	B	C	SW
M14 x 1.5	8 ^{-0.05}	12 ^{-0.1}	12 ^{-0.5}	6 ^{-0.25}	12	20	19
M18 x 1.5	10 ^{-0.05}	16 ^{-0.1}	16 ^{-0.5}	6 ^{-0.25}	14	20	19
1/2-20UNF-2A	7.8 ^{-0.05}	10.5 ^{-0.05}	11 ^{-0.5}	5.3 ^{+0.25}	11	16	19

Mounting Hole

D1	D2	D3	D4	A	B	C
M14 x 1.5	8.1 ^{+0.05}	12.1 ^{+0.1}	16	6.15 min.	4 max.	25
M18 x 1.5	10.1 ^{+0.05}	16.3 ^{+0.2}	20	6.15 min.	4 max.	25
1/2-20UNF-2A	7.92 ^{+0.05}	11.5 ^{+0.1}	13	5.7 min.	3.2 max.	19



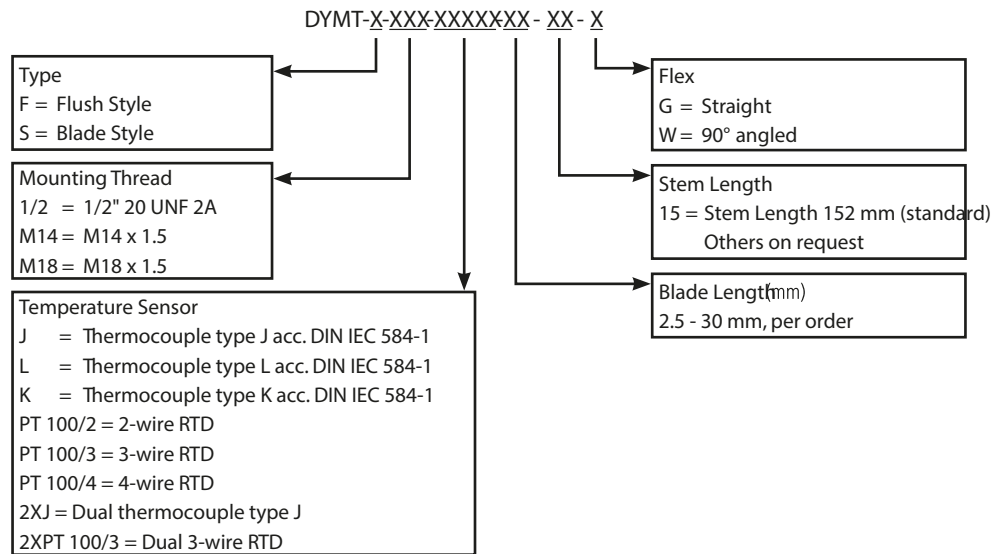
Mounting Instructions

Maximum mounting torque 40 Nm!

Under the following conditions:

- Avoid bending during screw into the mounting hole
- During screw out of the outer tube, avoid torsion at the inner tube
- Before mounting, ensure that the mounting hole is free from plastic residue

Ordering Guide



All dimensions are in inches (millimeters).
 ©2017. Dynisco reserves the right to make changes without notice.
 Refer to www.dynisco.com for access to Operator Manual and other support documentation.
 DSDYMT
 Rev:0617



www.dynisco.com

